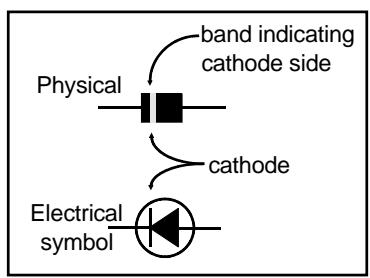
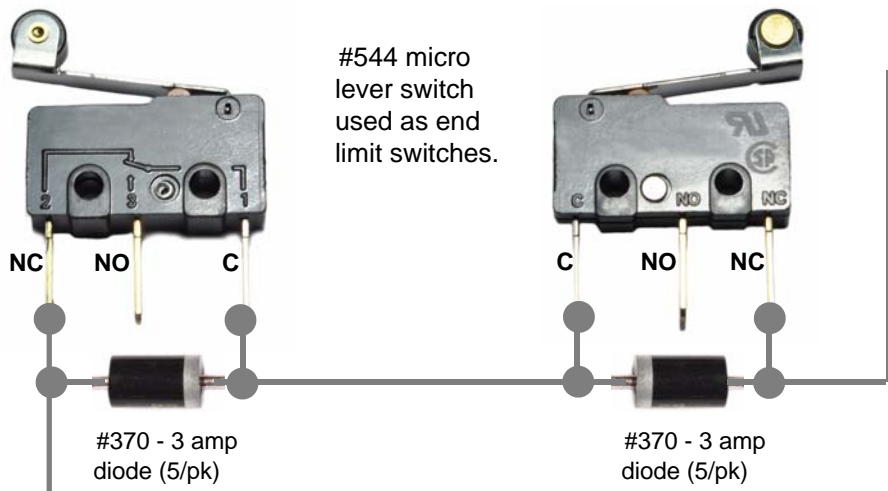
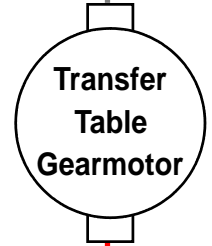


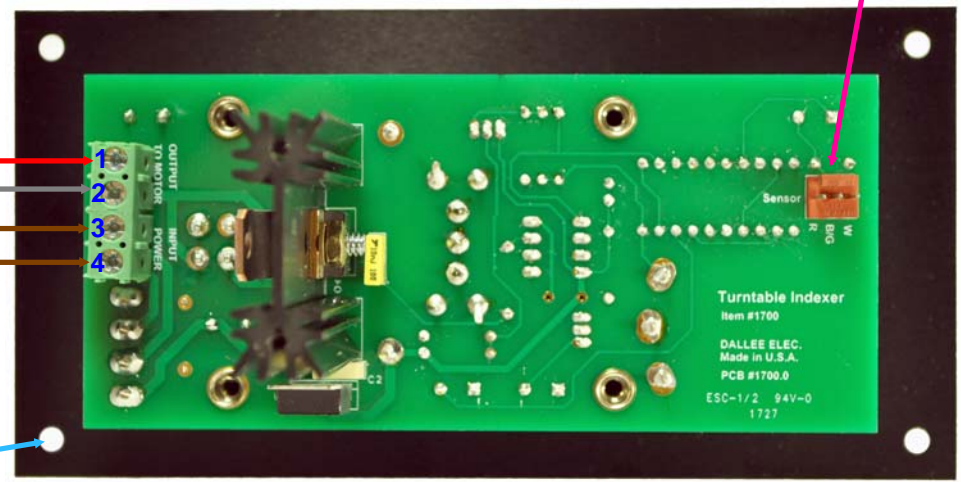
# TURNTABLE INDEXER, #1700 wiring diagram for use with a transfer table.



Position micro lever switches at each end of the transfer table. The switch needs to activate before the travel ends so that it can turn off the "Transfer Table Gearmotor". Upon activating the reverse switch on the Turntable Indexer, the transfer table will proceed in the opposite direction. The second micro lever switch needs to be located on that end as well to prevent overrunning.



Wire colors shown are only used to assist in wiring.



Fixed AC power for electronics (16 vAC)

use 6X32 mounting screws (4)

**DALLEE**  
ELECTRONICS, Inc.

246 W. Main St.  
Leola, PA 17540  
(717) 661-7041  
www.dallee.com