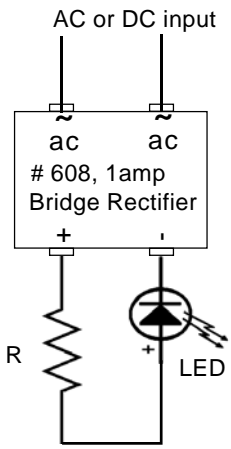


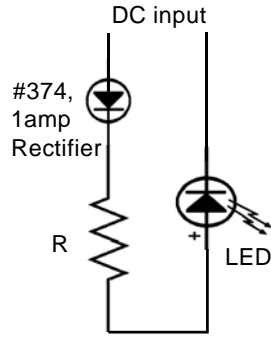
**Non-Directional LED wiring**



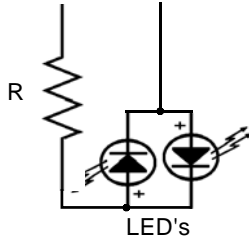
input V	R	Item#
3 - 5	68	541
12	390	535
16-24	1k	558

Values shown for limiting resistors are typical for the range of input voltages shown. Higher values will yield brighter LED's , make sure they can take the current flow. A basic formula to use:  $I (\text{led current}) = V_{in} (\text{input Voltage}) / R (\text{Resistor Value})$ .

**Directional LED wiring**



**dual LED wiring**  
AC input = Non-Directional  
DC input = directional LED's



246 W. Main St.  
Leola, PA 17540  
(717) 661-7041  
www.dallee.com