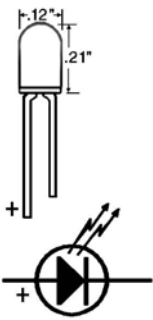


# Incandescent White LED

(T1 - 3mm) 4/pack Item #536



## SPECIFICATIONS:

<b>3000</b>	<b>millicandella</b>
3000K	color temp
120	milliwatt max
20	milliamps typ.
30	milliamps max.
3.1 - 3.8	Vfwd drop
30°	angle
5	Vpiv

## Suggested Limiting Resistors

input Vmax	R	Item#
5.5	68	541
15	390	535
24	1k	558

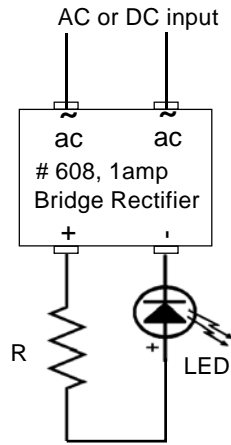
This Incandescent White LED represents the color of light bulbs. Input Vmax represents the maximum input voltage. The LED will start to illuminate at a lower voltage but the current rating of the LED will be exceeded if a lower value resistor is selected and a higher voltage is applied.

Improper handling or powering the LED will cause permanent damage.



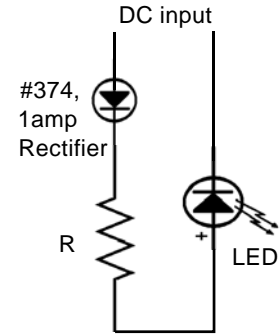
246 W. Main St.  
Leola, PA 17540  
(717) 661-7041  
www.dallee.com

## Non-Directional LED wiring

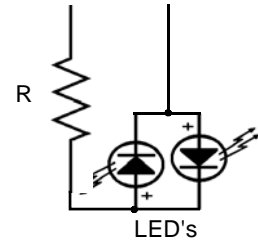


input Vmax	R	Item#
5.5	68	541
15	390	535
24	1k	558

## Directional LED wiring



dual LED wiring  
AC input = Non-Directional  
DC input = directional LED's



Values shown for limiting resistors are typical for the range of input

voltages shown. Higher values will yield brighter LED's, make sure they can take the current flow. A basic formula to use:

$R \text{ (ResistorValue)} = (V_{in} \text{ (input Voltage)} - V_{fwdLED}) / I \text{ (led current)}$ .  
VfwdLED is typically 3.45 volts.