
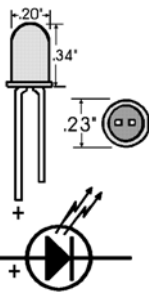


Incandescent White LED

(T1 3/4 - 5mm) 4/pack

Item #537

LED designed & manufactured in U.S.A. 



Specifications:

12,300 millicandella
 2950K color temp
 20 milliamps
 3.1 - 3.5 Vfwd drop
 20° angle
 5 Vpiv

Suggested Limiting Resistors

input Vmax	R	Item#
5.5	68	541
15	390	535
24	1k	558

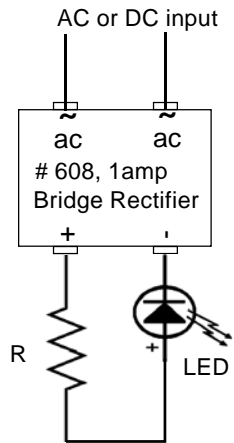
This Incandescent White LED represents the color of light bulbs. Input Vmax represents the maximum input voltage. The LED will start to illuminate at a lower voltage but the current rating of the LED will be exceeded if a lower value resistor is selected and a higher voltage is applied.

Improper handling or powering the LED will cause permanent damage.

DALLEE
ELECTRONICS, Inc.

246 W. Main St.
 Leola, PA 17540
 (717) 661-7041
 www.dallee.com

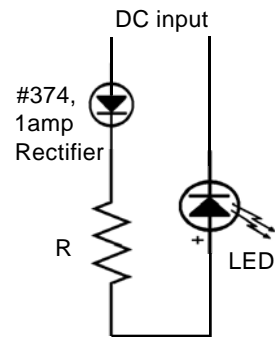
Non-Directional LED wiring



input Vmax	R	Item#
5.5	68	541
15	390	535
24	1k	558

Values shown for limiting resistors are typical for the range of input voltages shown. Lower resistor values will yield brighter LED's, make sure they can take the current flow. A basic formula to use: $R (\text{Resistor Value}) = (V_{in} (\text{input Voltage}) - V_{fwdLED}) / I$ (led current). VfwdLED is typically 3.45 volts.

Directional LED wiring



dual LED wiring
 AC input = Non-Directional
 DC input = directional LED's

