

New TURNTABLE INDEXER

Item #1700

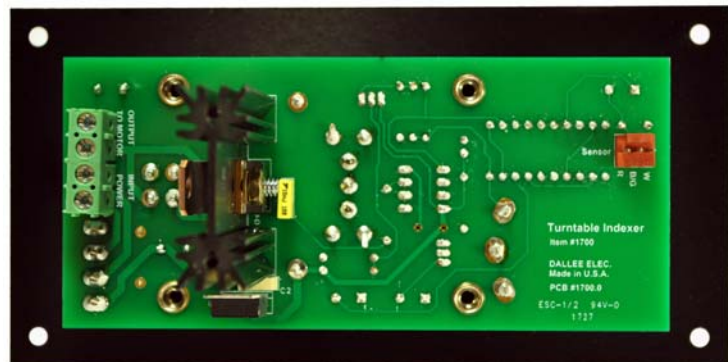
\$199⁹⁵



Actual size 6"l x 3"h x 3"d

Features:

- Infra-red reflective optical alignment with on/off selection.
- alignment LED's to facilitate easy setup.
- variable DC motor control voltage with momentum starts.
- up to 2½ amps output with overload protection.
- DPDT direction switch with center off position.
- faceplate made of black anodized aluminum. Text is laser cut into the aluminum for a durable finish.
- Requires 16 volts AC input with 2½ amps of input current or use item #690.
- Made in U.S.A.



Ordering information, under "Price Schedule", as well as on our web site at www.dallee.com. Just type the desired item number into the "search" box in the upper right hand corner to add it to your shopping cart or give us a call.

We sell direct and to qualified dealers.

All email should be directed to "info@dallee.com".

*requires a minimum s/h of \$14 within the U.S.A.